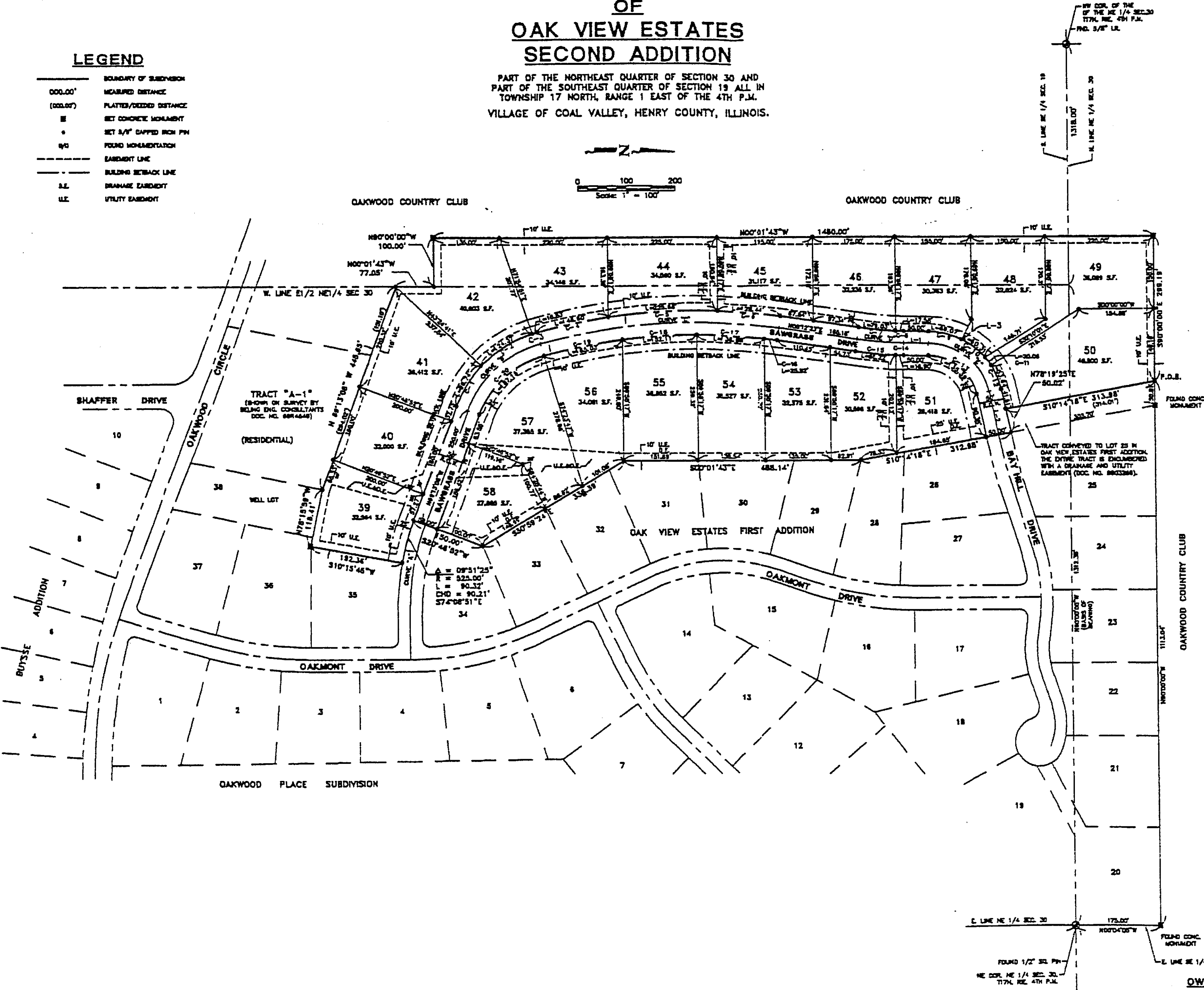
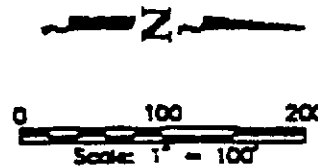


FINAL PLAT OF OAK VIEW ESTATES SECOND ADDITION

PART OF THE NORTHEAST QUARTER OF SECTION 30 AND
PART OF THE SOUTHEAST QUARTER OF SECTION 19 ALL IN
TOWNSHIP 17 NORTH, RANGE 1 EAST OF THE 4TH P.M.
VILLAGE OF COAL VALLEY, HENRY COUNTY, ILLINOIS.

LEGEND

- BOUNDARY OF SUBDIVISION
- 000.00' MEASURED DISTANCE
- (000.00') PLATTED/DEEDED DISTANCE
- SET CONCRETE MONUMENT
- SET 3/4" CAPPED IRON PIN
- 1/4" FOUND MONUMENT/ATCH
- - - EASEMENT LINE
- - - BUILDING SETBACK LINE
- S.E. DRAINAGE EASEMENT
- U.E. UTILITY EASEMENT



NW COR. OF THE
OF THE NE 1/4 SEC. 30
T17N. R1E. 4TH P.M.
P.D. 3/8" I.R.

S. LINE NE 1/4 SEC. 19
1318.00'
N. LINE NE 1/4 SEC. 30

E. LINE NE 1/4 SEC. 30
175.00'
N. LINE NE 1/4 SEC. 30
1174.00'

OWNER
BEV...